



COURSE &
CLUBHOUSE
INFORMATION

Welcome

to Sydney's newest golf course at one of Sydney's oldest clubs

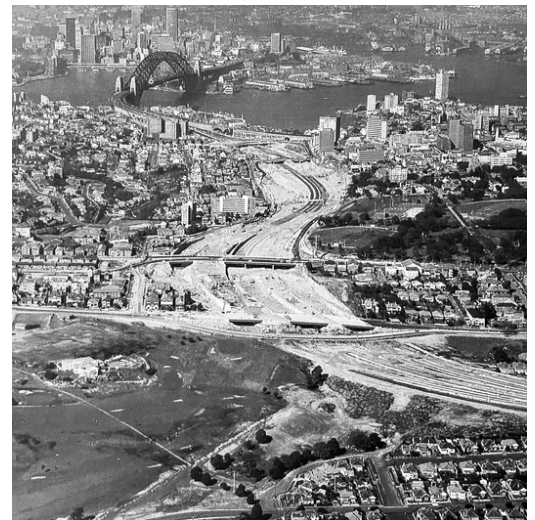
Cammeray Golf Club has seen a huge amount of change in our 117 year history.

The course is on it's third nine hole layout - both reconfigurations have occurred due to Warringah Freeway infrastructure projects.

The newly constructed 9 hole, par 3 course is unique and features large undulating greens, spacious tee blocks and turf typically used on championship courses. The turf used on the tees and fairways is Tahoma 31 (a couch hybrid) while the greens are A1/A4 bent grass (established from seed).

Our signature dam is back, not only to challenge golfers, but to maintain ongoing functionality of the North Sydney Stormwater Re-use Scheme. The stormwater from the dam irrigates the golf course as well as nearby Primrose Park, Tunks Park and St Leonards Oval.

The new course layout is an exceptional community facility and is the product of combined efforts from Transport for NSW, our course architect and design team, our project managers and the construction team.



About the reopening



The course is evolving and looking better by the day.

The greens are young and the course is showing some signs of the construction - some squares of turf can still be lifted and footprint size seams exist in places on the course. By Christmas time it will be looking much closer to the final product. The course design includes cart / walking paths through most of the course and there will be a small fleet of golf carts available for hire.

In order to nurture the course through this period but still have our Members playing, we need to carefully manage the number of players on the course each day. The following restrictions will be in place:

- A limited number of players per day until the end of August.
- Synthetic tee blocks will be used on each hole, most likely until spring/summer . This is essential to protect the grassed tee blocks and will be strictly enforced.
- We will be experimenting with tee time intervals.
- The greens are susceptible to fungal and pest infection - so we ask you to repair all plug marks on the greens, even if they are not yours.
- Areas showing signs of construction will be marked GUR - golf carts and buggies must not be taken into roped off areas. Please follow all directional signs.
- Initially there will be no walk up starts, you must have a booking to play.



Competition Days – Lifestyle Playing Member

18 Holes - Thursday & Sunday

9 Holes - Everyday

All competitions will be medley fields

All players will hit from the same tee markers

Golf NSW will provide separate men's and women's slope ratings

Only 18 hole competitions will have discrete Member only fields

Competition fees \$20 for 18 holes / \$15 for 9 holes (inclusive of \$10 green fee)

Member social green fees \$10 - applies to every round

Competition Days – Casual Lifestyle Playing Member

9 Holes - Everyday

All competitions will be medley fields

All players will hit from the same tee markers

Golf NSW will provide separate men's and women's slope ratings

Competition fees \$15 for 9 holes (inclusive of \$10 green fee)

Member social green fees \$10 - applies to every round



On the course

July to September 2023

This will be an opportunity to familiarise yourself with the layout and the new local rules. Fixtures will be limited to Stableford events with limited fields per day.

All play will be from the synthetic tee blocks and limited pin positions will be used on greens until growing conditions improve in the spring.

Social golf for the public will recommence in August 2023.

October to December 2023

The opportunity to set the new course record will be available from October!

Fixtures will be released closer to the time subject to the condition of the course. We hope to include Club Championships, Cammeray Cup and other Honour Board events.

Play will be changed to grassed tee blocks, utilising more pin positions and larger competition fields.

Tee sheet release

Tee sheets will be released to Members 35 days in advance. Public bookings will be released 30 days in advance.

*Subject to change

Golf equipment

A range of Titleist and Callaway products will be available for purchase including ProV1 and Chrome Soft balls, caps, gloves, Cammeray Golf shirts, bags, towels and umbrellas.

We will be taking orders in August for new Cammeray shirts which are available only to Members.

The Clubhouse

The Bar will be the single point of service for everything golf and food and beverage related. There will be a limited range of snacks available from the Bar - such as pies, pasties, sandwiches and chocolate bars. This will be expanded over time.

The focus is getting Members out on the course and nursing the course through this period, so there will only be limited number of events held in the Clubhouse.

Club storage is available for bags and/or buggies only. We are unable to store electric buggies due to insurance restrictions.

Lockers and showers will not be available.

There will not be a golf professional immediately upon reopening.

We appreciate your support during this transitional period for the Club.



The course



	BLUE	WHITE	INDEX		PAR
Hole 1	154	111	7	8	3
Hole 2	85	69	15	16	3
Hole 3	119	90	11	12	3
Hole 4	121	92	3	4	3
Hole 5	138	120	9	10	3
Hole 6	86	64	5	6	3
Hole 7	103	79	13	14	3
Hole 8	76	66	17	18	3
Hole 9	161	139	1	2	3
	1043	830			27

The course

