

# SakaeChika Floor Guide

English  
英語

## SHOP LIST

### Ladies' Fashion

W28	Ginza Hanabishi	Women's Clothes	052-955-3002
W30	Taxi	Women's Clothes	052-971-3211
W31	NATURAL BEAUTY BASIC	Women's Clothes	052-253-9639
E66	Sud et nord	Women's Clothes	052-971-1100
E68	TOKYO MASUIWAYA	Kimono/Kimono Accessories	052-951-2444
E70	prime donna	Women's Clothes	052-971-3741

### Fashion Goods

W03	WIG YUKI	Women's Wigs/Hairpieces	052-950-3711
W07	Veramore di nucleo	Jewelry/Accessories	052-955-5057
W08	Intimissimi	Lingerie	052-228-6022
W12	ABC-MART MONO	Shoes	052-957-5535
W14	ORIENTAL TRAFFIC	Women's Shoes	052-684-7600
W19	asics WALKING	Shoes	052-971-5205
W22	JINS	Eyeglasses/Sunglasses	052-951-7752
W29	Quark	Rolex Shop	052-971-0310
E55	OLYMPIA (West)	Fashion Items	052-971-2186
E56	OLYMPIA (East)	Fashion Items	052-971-2186
E61	KINUYA	Silk Accessories	052-259-6552
E63	tutuanna GRANDE	Socks/Pajamas	052-951-8815
E64	ARTE Coffret À Bijoux	Accessories/Fashion Items	052-951-3303
E65	IBIZA	Bags/Purses	052-219-2112
E67	Lattice	Accessories/Fashion Items	052-963-5221
E69	MONTAGNE sakaechika	Vintage Watches	052-954-1616
E71	fitfit	Women's Shoes	052-212-9751
E72	Megane Ichiba	Eyeglasses/Contact Lenses	052-950-6520
E73	sucre sel	Accessories	052-211-7811
E74	madras madras Repair	Men's Shoes Shoe Repair	052-971-5933 052-951-3310

### Cosmetics & Drugstore & Lifegoods

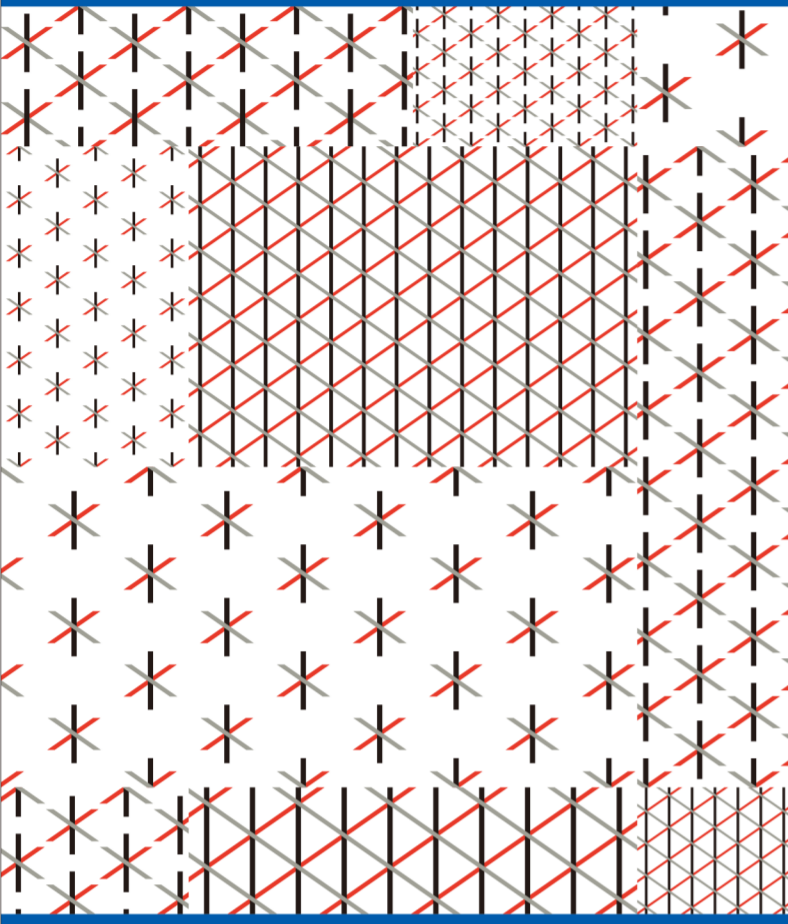
W09	VITA	Hair Care Products/ Imported Cosmetics	052-228-7800
W27	Anker Store	Smartphone Accessories/ Home Appliances	070-1267-7084
N34	Murasakiya	Cosmetics	052-951-3181
N52	Bookstore Kamakura Bunko	Books/Stationery	052-951-2346
E53	amano+	Drugstore	052-971-6586
E54	Dispensing Pharmacy amano	Dispensing Pharmacy	052-971-6663
E59	cassetto	Smartphone case&repair	052-228-8016

### Café & Restaurant & Food

W26	coffee Als	Café	052-951-7256
N35	NIGIRITATE	Onigiri/Boxed Lunch/Ohagi	052-971-2800
N36	Beef Tongue Natori	Ox Tongue Restaurant	052-955-0029
N37	Hamburg & Steak "Koshizuka"	Hamburg Steak/Beef Steak	052-211-7028
N38	Curry & Curry Bun "Tenma"	Curry/Curry Bun	052-211-7370
N39	GRANDIR	Bakery/Café	052-253-6415
N40	Myokoen / MYOKOEN TEA STORE	Japanese Tea/ Takeaway Drinks	052-951-2280
N41	Ginza Lion	Beer Hall	052-959-3200
N42	Sukiya	Beef Bowl/Curry	0120-498-007
N43	Tamago To Watashi	Rice Omelet	052-957-4623
N45	DOUTOR COFFEE	Café	052-228-9679
N47	EBINOYA	Tempura/Soba Noodle	052-211-8979
N48	KALDI COFFEE FARM	Coffee/Imported Foods	052-962-0030
N49	Syougetu	Grilled Eel	052-971-1814
N50	Azumazushi Honten	Sushi	052-971-2126
N51	TORISANWA	Chicken Dishes	052-253-6700
E57	Hoshino Coffee	Café	052-684-5376
E58	NONARA PEARL	Bubble Tea Shop	052-265-9303
E60	Yamatoya	Japanese Pickles/ Light Lunch (11:00-15:00)	052-971-5753
E62	Cupping Room @ Caffé Bontain	Coffee Beans	052-253-5765

### Service

W06	Travelex	Currency Exchange/ International Money Transfer	052-684-4751
W16	Hoken No Madoguchi	Insurance Consultation	052-957-6556
W18	MONEQUE	Insurance/Housing Loan/ Asset Formation	052-950-7131
W21	Dr.stretch	Stretch Therapy	052-228-0246
W23	atelier haruka / MANICURE HOUSE	Hair & Makeup/Nail Salon	052-962-3400
W24	Total Therapy	Massage Salon	052-228-2595
N32	d garden Sakae	docomo Cellphone Shop	0120-337-036
N33	docomo iPhone / iPad Repair Corner	Phone Repair	0120-881-900
N46	SEVEN BANK ATM	Automatic Teller Machine	



**WIFI** NAGOYA Free Wi-Fi

NAGOYA Free Wi-Fi can be used in SakaeChika.

Available for all persons using Wi-Fi devices.  
Available in 6 languages (Japanese, English, Chinese (traditional/simplified), Korean, and Thai)

Network Name/SSID: **00\_NAGOYA\_Free\_Wi-Fi**

Connection for 1 session lasts 30 minutes.

<https://sakaechikamachi.co.jp>

Sakae Chikamachi Co., Ltd.

3-23-18 Nishiki, Naka-ku, Nagoya, Aichi Pref.  
TEL:052-962-6061 FAX:052-962-6062

April 2022

SakaeChika

## SakaeChika FLOOR MAP

[ Address ] 3-4-6, Sakae, Naka-ku, Nagoya  
[ Opening times ] 10:00~20:00

◆ Some of the shop opening hours may be different.  
Please visit SakaeChika website for more details.  
<http://www.sakaechika.com>

◆ The North Passage and CRYSTAL HIROBA are accessible till 24:00,  
the East and West Passages, and Entrance S1 are accessible till 22:00.



SakaeChika website



Contact Information

**S1 - S10b** Entrance to SakaeChika    **1 - 16** Subway entrance

Subway ticket gates    Toilets    Wheelchair access toilets

Elevator    Heart emergency equipment    Wheelchair slope

Space for relaxation    Disaster control center (Lost & Found)    Lost & Found

Evacuation route    Fire extinguisher    barrier free route

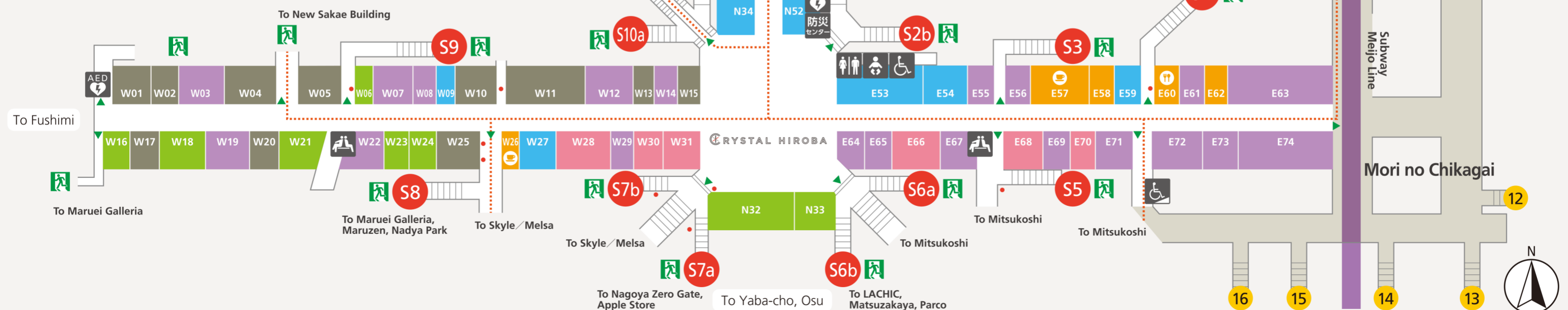
**Ladies' Fashion**

**Fashion Goods**

**Cosmetics & Drugstore & Lifegoods**

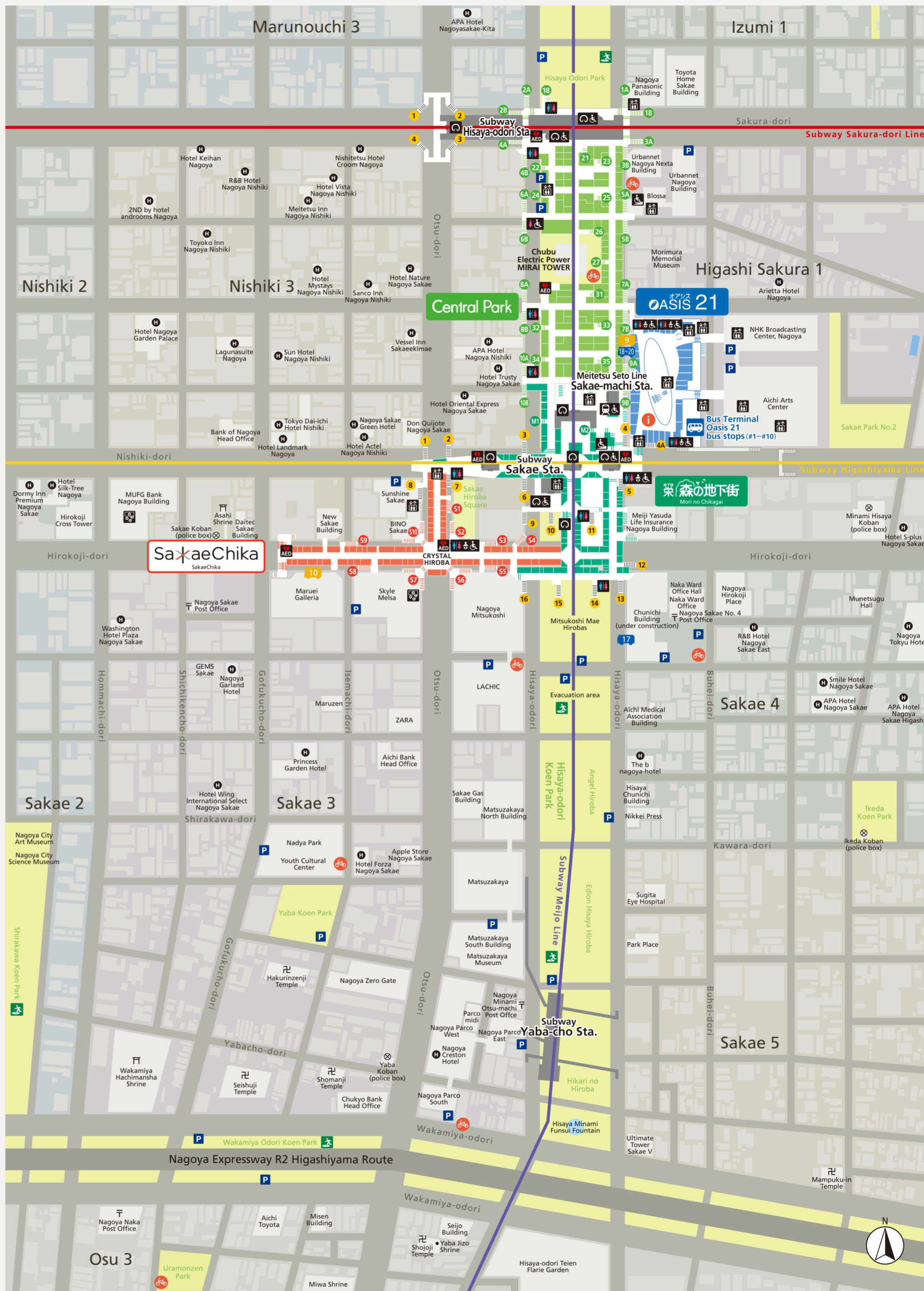
**Café & Restaurant & Food**

**Service**



# SAKAE TOWN MAP

- Entrance to SakaeChika
- Entrance to Central Park
- Entrance to Mori no Chikagai
- Subway entrance
- Toilets
- Wheelchair access toilets
- Heart emergency equipment
- Wheelchair slope
- Elevator
- Parking entrance for cars
- Hotel
- Evacuation area
- Subway ticket gates
- Subway ticket gates (Wheelchair-accessible)
- Meitetsu Seto line ticket gate (Wheelchair-accessible)
- Bus Terminal
- City bus stop
- Me-guru Bus bus stop
- Foreign currency exchange locations
- Tourist Information Center
- Bicycle rental



## Nagoya municipal subway map



On Sat., Sun., National Holidays and the 8th of each month,  
**Save Money with a Weekend Eco Ticket!**  
 Ride all you want on city buses and subway lines!  
**Adult: 620yen Child: 310yen**  
 Where to buy | At subway station ticket counters, in city buses, station manager offices, etc.  
 \*This pass cannot be used on the Yutorito Line elevated track sections (Ozone to Obata Ryokuchi) or on Meitetsu Buses or on the Anonmi Line.

## Nagoya Sightseeing Route Bus Me-guru

Enjoy convenience at a reasonable price!  
 Visit popular sightseeing spots on Nagoya Sightseeing Route Bus Me-guru.

**Services** **Tues.—Sun.** Sat., Sun. and National Holidays: every 20–30 min.  
 Weekdays (except Mon.): every 30–60 min.  
 Closed: Mondays (or the following weekday if Monday is a holiday), Dec. 29th to Jan. 3rd.  
 During Obon holidays (Aug. 13th–15th), timetable is the same as Sat. Sun. and national holidays.

**Route** Bus stop Chubu Electric Power MIRAI TOWER Hirokoji Sakae

Nagoya Sta. → Toyota Commemorative Museum of Industry and Technology → Norikata Garden → Shikemichi → Nagoya Castle → Nagoya Castle East / City Hall → Tokugawa-en, The Tokugawa Art Museum, Hosa Library → Cultural Path Futaba Museum → Nagoya City Archives South → Chubu Electric Power MIRAI TOWER → Hirokoji Sakae → Hirokoji Fushimi → Nagoya Sta.

**One-day ticket**  
**Adult: 500yen Child: 250yen (elementary school age)**  
 \*Tickets sold in Me-guru buses. Please buy when boarding. \*Single ride Adult, 210 yen; Child, 100 yen  
 \*One-day Bus & Subway Combination Ticket and Weekend Eco Ticket issued by Transportation Bureau, City of Nagoya can be used.  
 The "Manaca" IC card is also valid.

